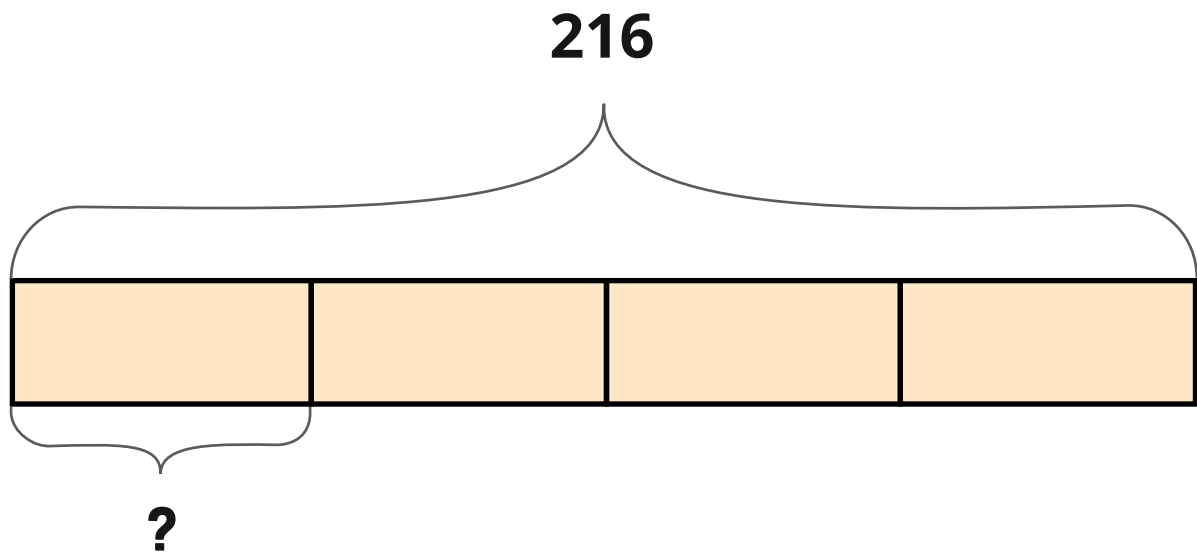


POST 1



Hvilket regnestykke kan dette være?



Skriv regnestykket og finn svaret.

POST 2



Fredrik har 150 L suppe.
Han skal selge suppen i kopper som rommer 5 dL.

Hvilke to regneuttrykk viser hvor mange kopper med suppe Fredrik kan selge?

A $150 \cdot 5$

D $150 \cdot 2$

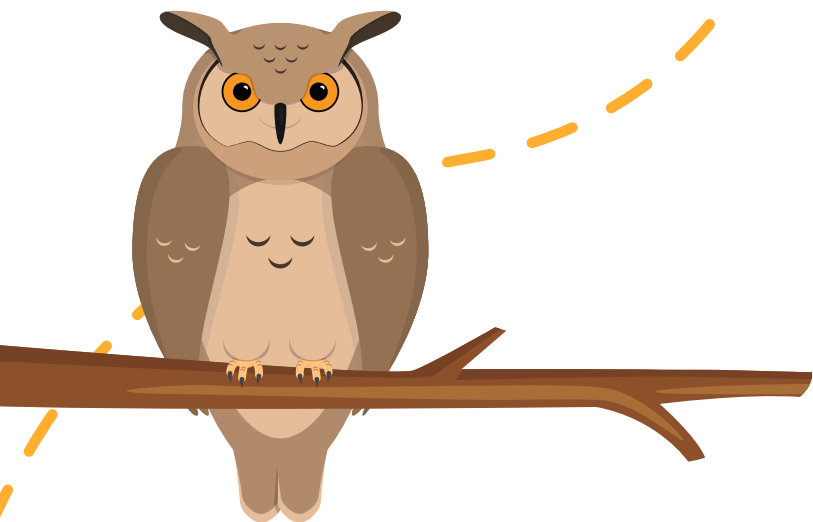
B $150 : 5$

E $150 : 2$

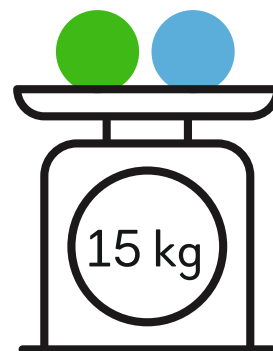
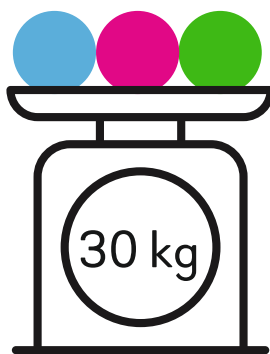
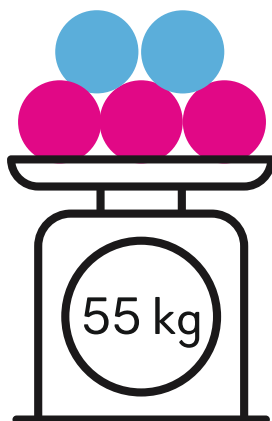
C $150 : 0,5$

F $150 \cdot 0,5$

POST 3



Hvor mye veier en grønn kule?



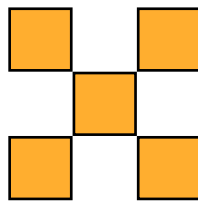
POST 4



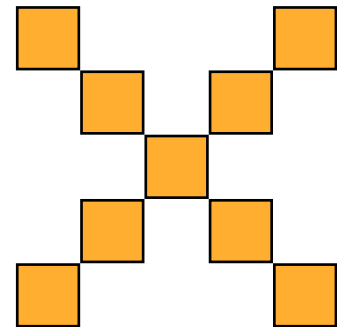
Her er et figurmønster:



Figur 1



Figur 2



Figur 3

- **Hvor mange kvadrat består figur 4 av?**
- **Hvor mange kvadrat består figur 10 av?**

POST 5



Hemmelig ord:

O X S Å F N Q Å R

Bruk alfabetet til å finne ordet.

A	B	C	D	E	F	G	H	I	J
K	L	M	N	O	P	Q	R	S	T
U	V	W	X	Y	Z	Æ	Ø	Å	

POST 6



Hvor mye kan en , en  og et  koste?

$$\text{carrot} + \text{carrot} + \text{carrot} = \text{pear} + \text{pear} + \text{pear} + \text{pear}$$

$$\text{pear} + \text{pear} + \text{pear} = \text{strawberry} + \text{strawberry}$$

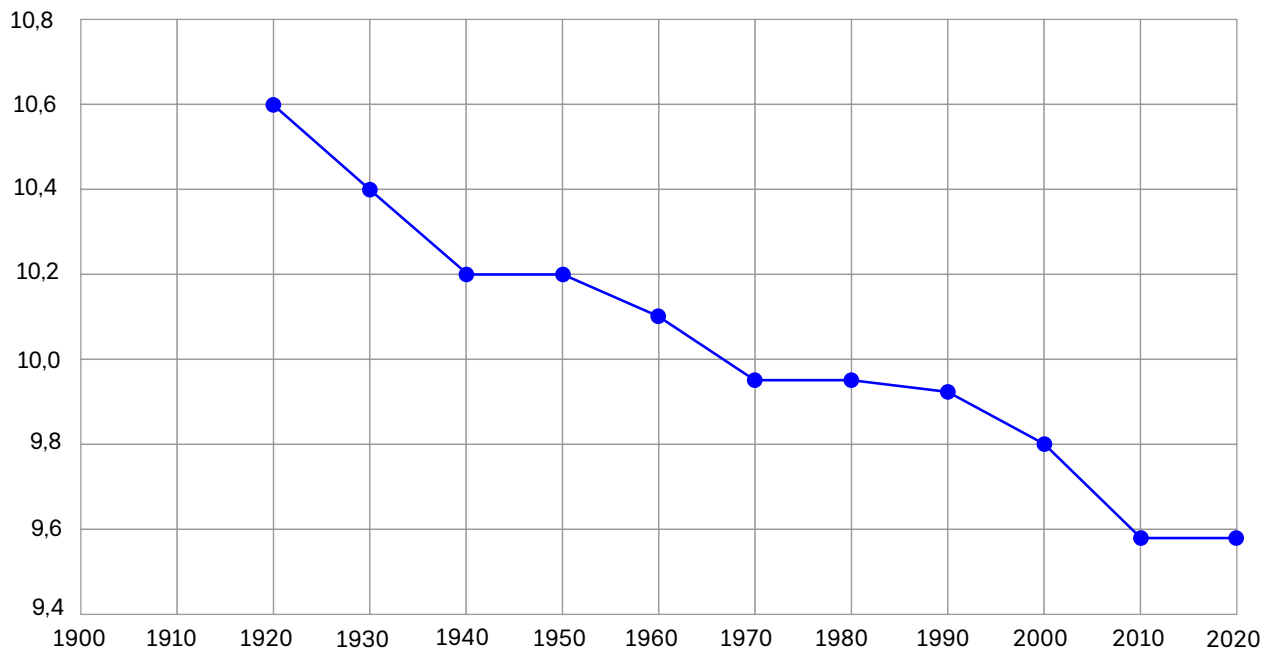


POST 7

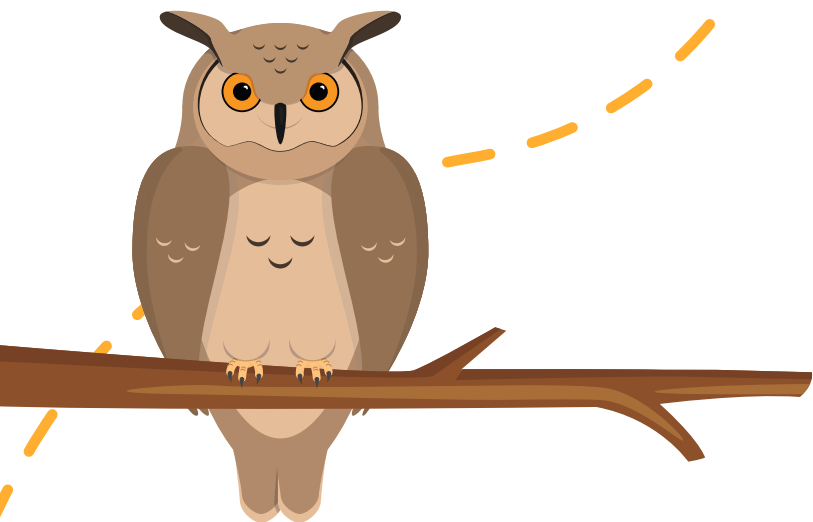


Diagrammet viser utviklingen av en verdensrekord i friidrett.

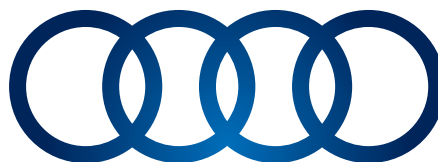
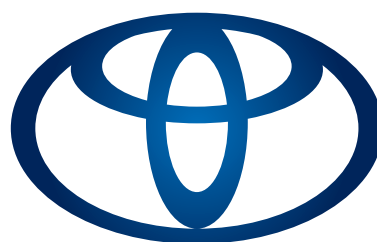
Hvilken idrett?

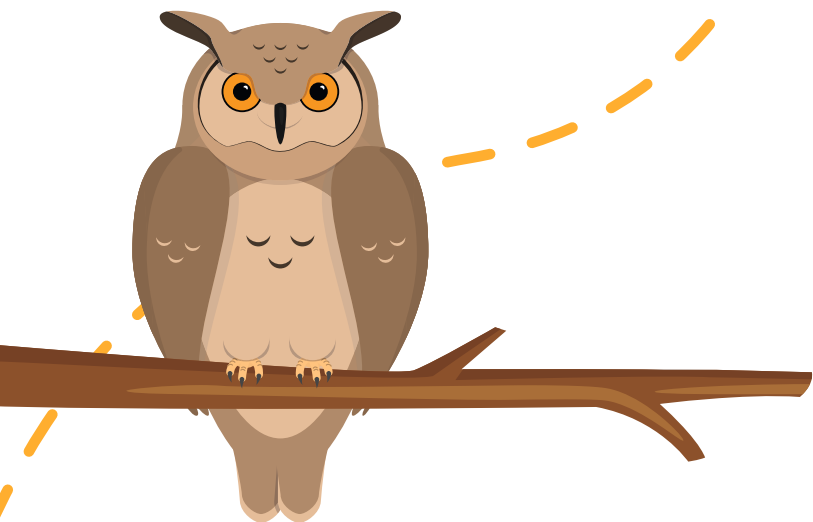


POST 8



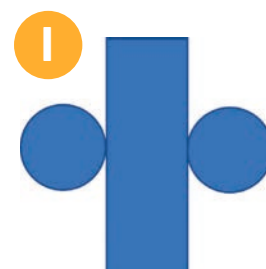
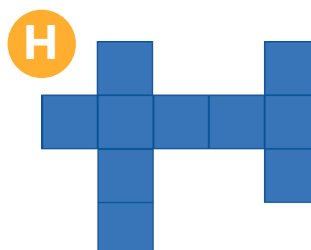
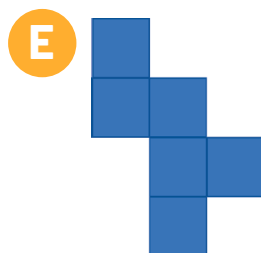
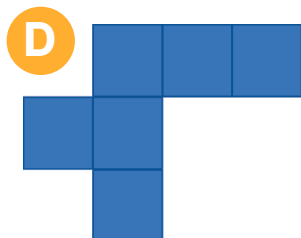
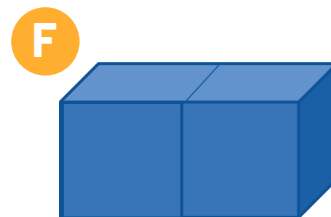
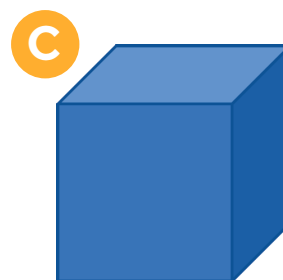
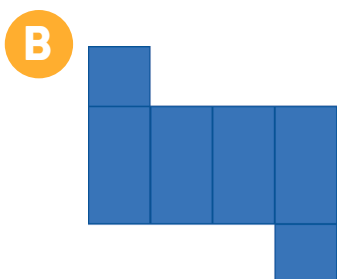
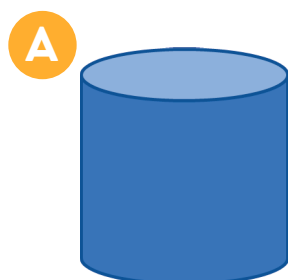
Hvem skal ut?



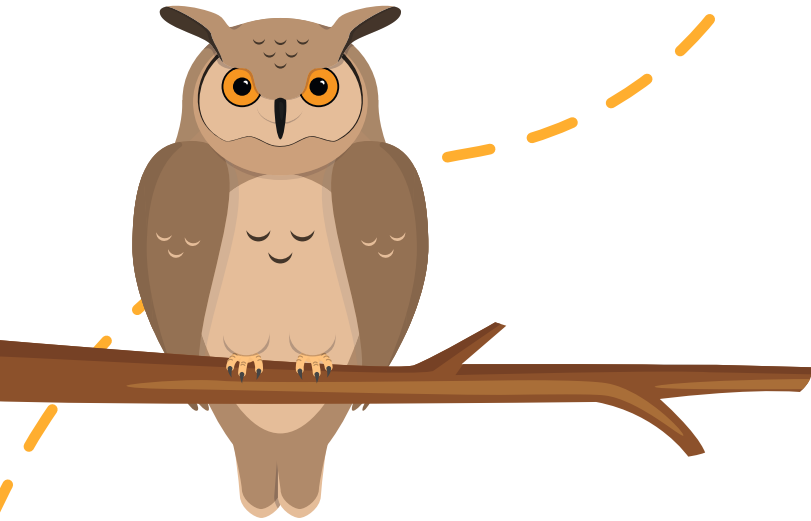


Tredimensjonale figurer

Hvilke hører sammen?

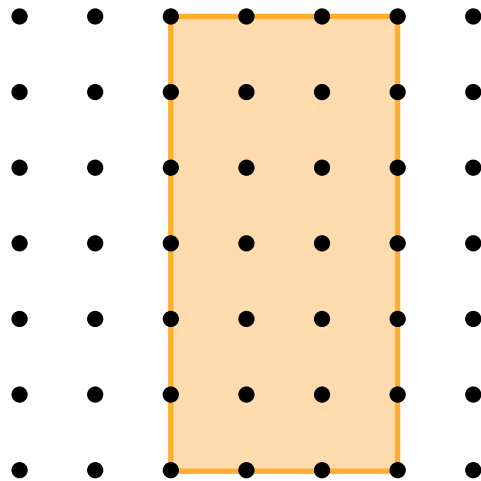
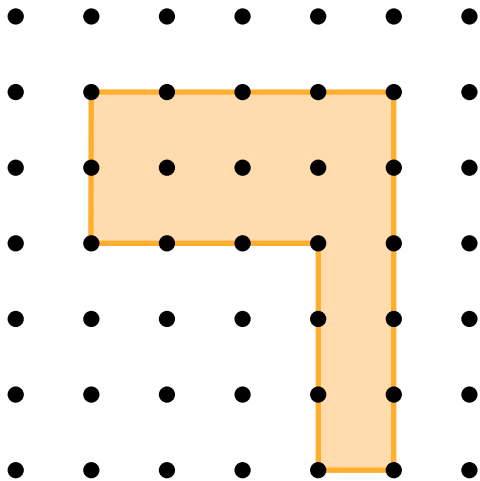


POST 10



Hva er likt?

Hva er forskjellig?



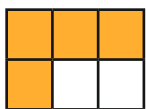
POST 11



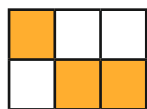
Hvis svaret er 24, er ruta oransje.

$12 : \frac{1}{2}$	$(6 \cdot 2) \cdot (2 : 2)$	$2 \cdot 2 \cdot 3 \cdot 2$
$8 + 17$	$86 - 62$	$\frac{1}{2} \cdot 36$

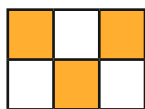
Hvilken figur er riktig?



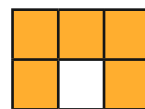
A



B



C



D

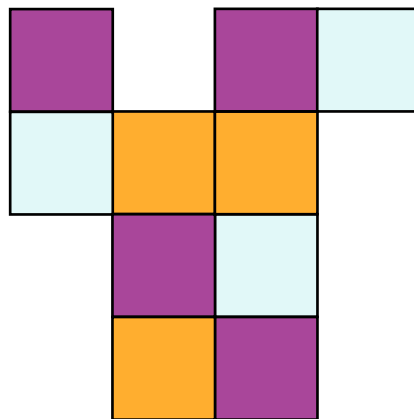


E

POST 12



Figuren viser en utbrettet eske.



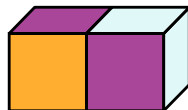
Hvilket svaralternativ viser ikke denne esken?



A



B



C



D

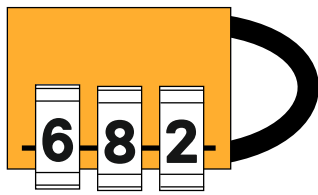


E

POST 13



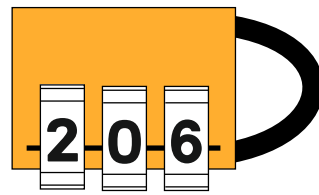
For å låse opp en kodelås får du fire ledetråder.



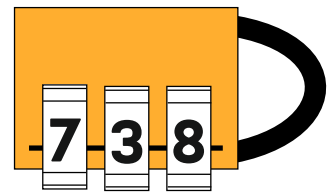
Ett siffer er riktig og på rett plass



Ett siffer er riktig, men på feil plass.



To siffer er riktige, men begge er på feil plass.



Ingen siffer er på rett plass.

Hvilken kode låser opp låsen?

A 042

B 082

C 640

D 604

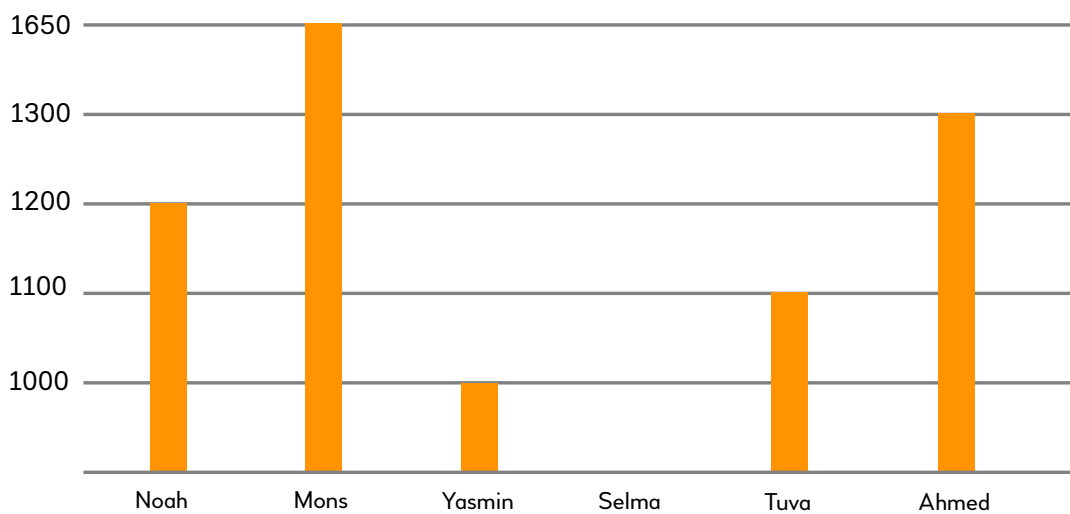
E 046

POST 14



Diagrammet viser lønnen til seks venner en uke i 2023.

Hvilke utsagn er riktige?








- A** Mons tjente mest av vennene.
- B** Ahmed tjente dobbelt så mye som Tuva.
- C** Selma har ikke jobb.
- D** Mons tjente 200 kr mer enn Noah.
- E** Inndelinga på y-aksen er feil.

POST 15



Hvert dyr skal plasseres én gang i hver rad, kolonne og 2x2-boks.

Hvilket dyr skal stå i den gule ruta?

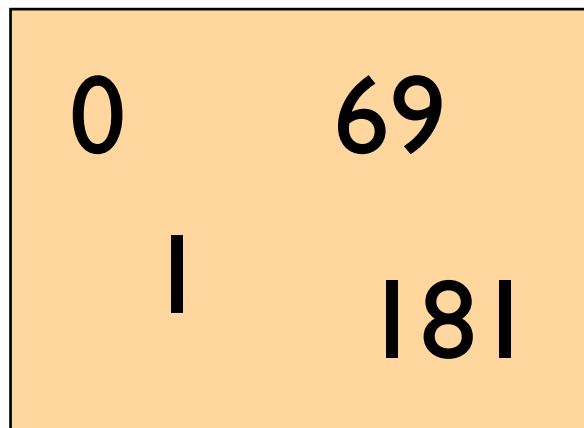
			
			
			
			

POST 16



Susanne har skrevet noen tall og oppdager at de leses likt når hun snur arket og leser tallene på hodet.

Hvor mange slike tall finnes fra 0 til 200?



POST 17



På samme tid

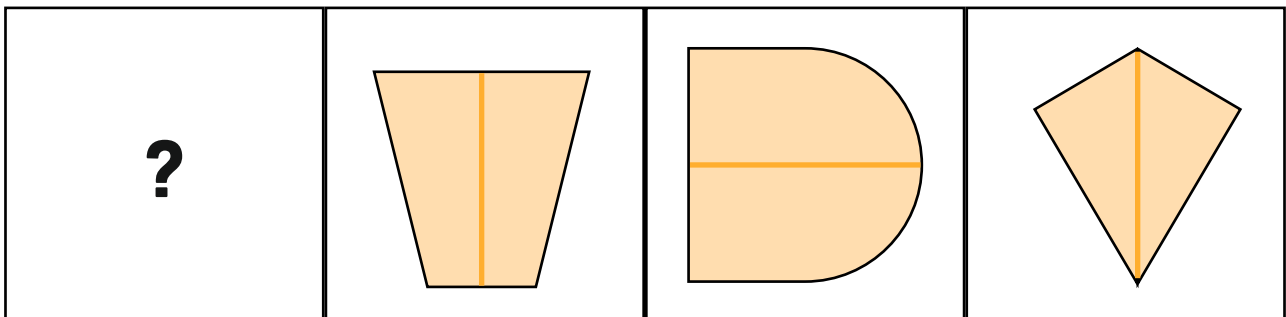
- Alle går gjennom ei løype med markert start og slutt.
 - Ta tida.
- Alle går gjennom løypa på nytt og prøver å bruke like lang tid som forrige gang.
- Finn forskjellen i tid.

Gjør aktiviteten flere ganger.

POST 18



Hvilken figur kan passe inn?



POST 19



Hvor lang?

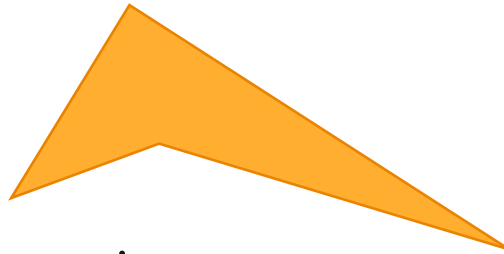
- Finn noe du mener er 15 mm langt.
 - Mål og finn forskjellen.
- Finn noe du mener er 100 cm langt.
 - Mål og finn forskjellen.

Gjenta aktiviteten med ulike lengder.



Geometriske figurer

Lag en slik firkant:



Hvilke tilpasninger må dere gjøre for å endre firkanten til:

- et trapes
- et parallellogram
- et rektangel
- en rombe
- et kvadrat

